

# CLIMATE CHANGE IN POLAR REGIONS

---

Iga Józefiak

Erasmus+ Cooperation for innovation and the exchange of good practices

School Exchange Partnerships "Climate is a topic!"



Erasmus+



# ABOUT MYSELF...





# PRESENTATION PLAN

---

- Climate change - facts and myths
- Polar regions - what are they and why are they important?
- Real life experience
- Global and local solutions

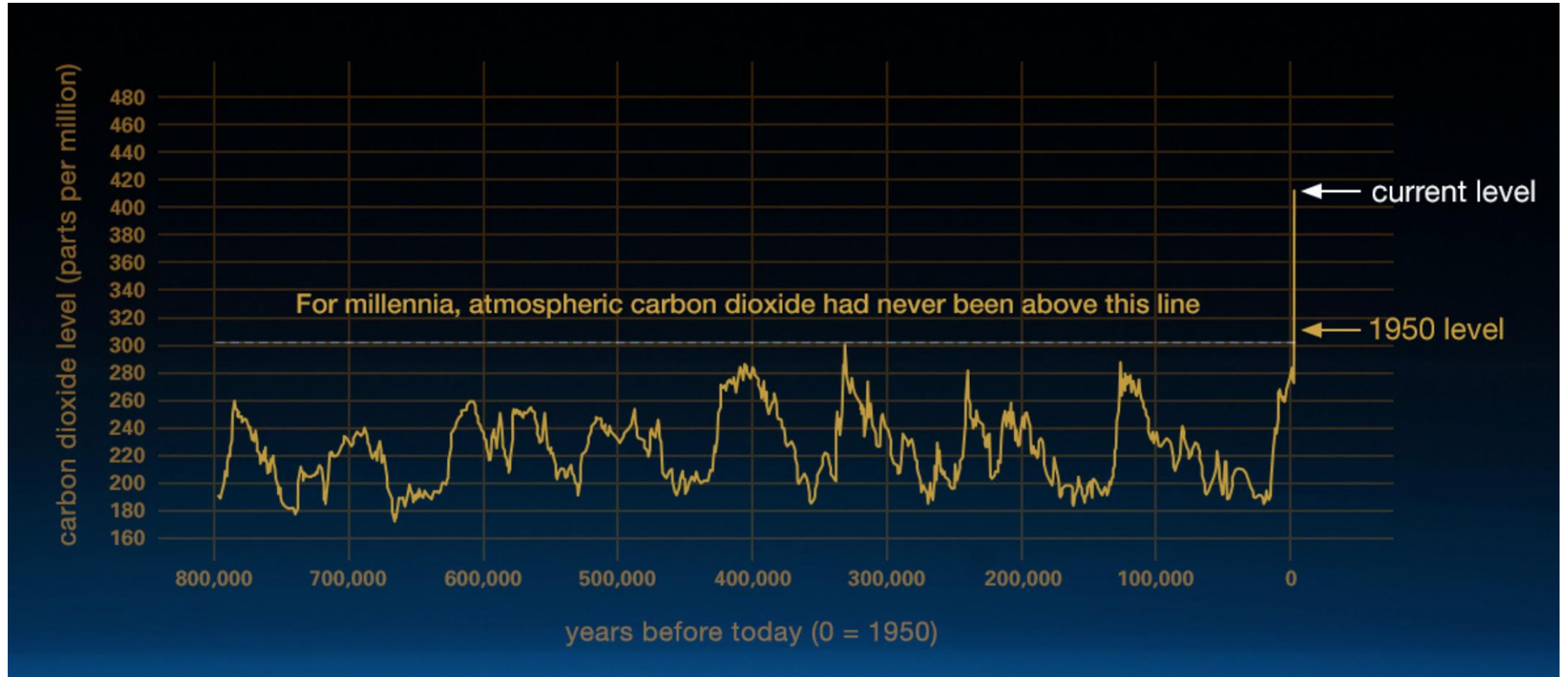


# CLIMATE CHANGE - FACTS

---

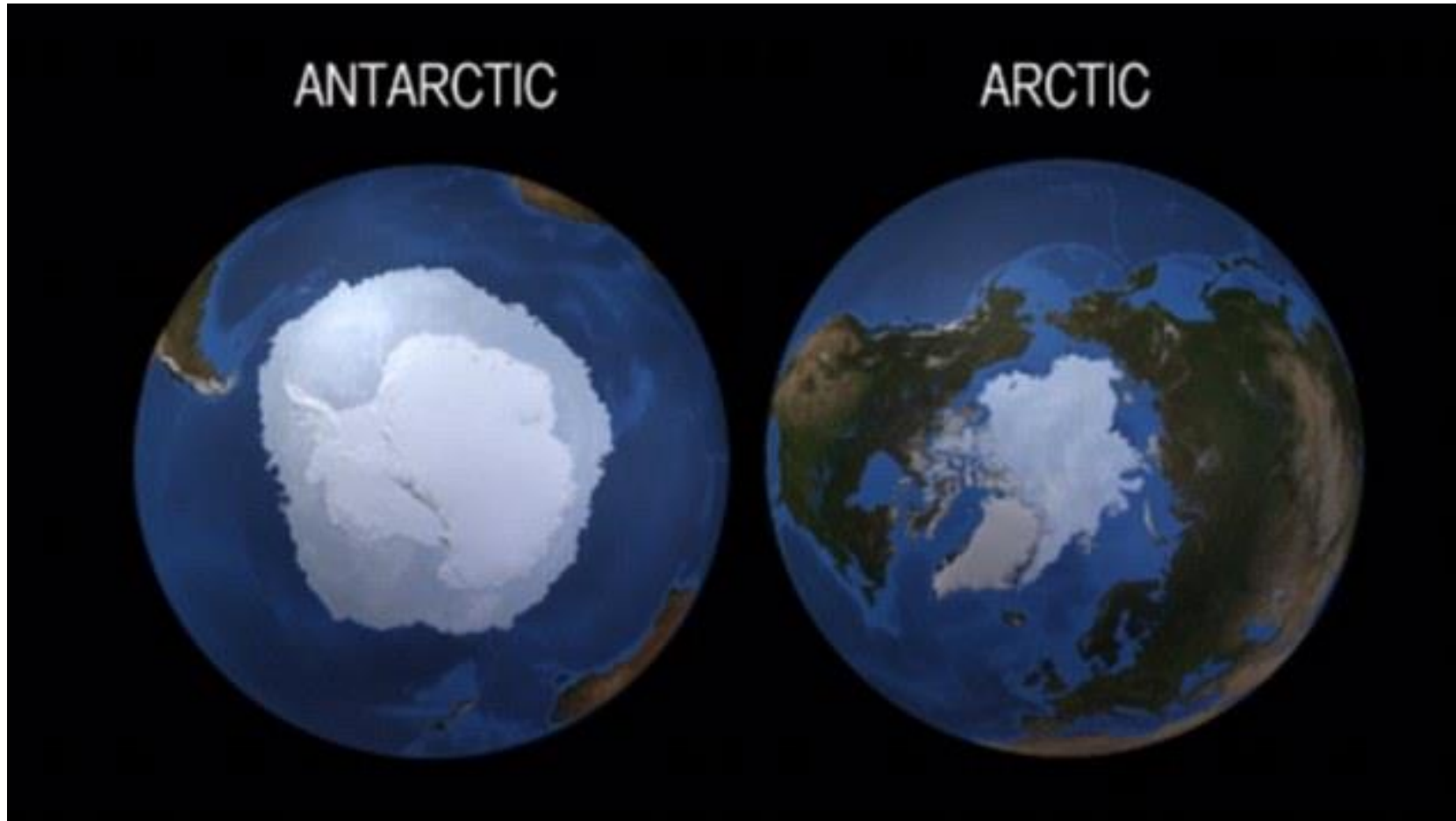
- Greenhouse gases (CO<sub>2</sub>, H<sub>2</sub>O, CH<sub>4</sub>,...)
- Extreme weather events
- The situation is real
- Economic and political aspects

# CLIMATE CHANGE - DEBUNKING THE MYTHS



# POLAR REGIONS

---





# POLAR REGIONS

## THE ARCTIC

**Average Yearly Temperature**  
The Arctic is freeeezing!



**Animals!**  
The Arctic is at the top of the Earth (North!)



Polar Bears live in the Arctic and love to eat Seals!

**People & Population**



2 Million native people call The Arctic 'home'!

**Penguins do not live in the Arctic!**

## VS

**Average Yearly Temperature**  
The Antarctic is the coldest place on the Earth!



**Animals!**  
The Antarctic is at the bottom of the Earth (South!)

**Nope, none of these in Antarctica!**

**Penguins do however live Antarctica!**

**Very few people live in Antarctica!**

## ANTARCTICA

# IMPORTANCE OF POLAR REGIONS

---

- Polar regions influence the climate around the entire world
- Most profound effects of climate change are visible in polar regions – polar amplification
- Permafrost melting in the Arctic
- Bubbles of air trapped in the Antarctica
- Unique fauna and flora
- Huge sea level rise given poles melt



# WHAT IF THE POLES MELT ENTIRELY...?

---



# REAL LIFE EXPERIENCE







# WHAT TO DO ABOUT CLIMATE CHANGE?

---

On a global scale:

- Reduction of Greenhouse Gases emissions (particularly CO<sub>2</sub>)
- A paradigm shift ("Prosperity without growth")
- Binding agreement with efficient compliance mechanism

# WHAT TO DO ABOUT CLIMATE CHANGE?

---

On a local scale:

- Educate yourself and others
- Reflect on your consumption patterns
- Walk or cycle instead of using a vehicle
- Eat locally and reduce meat consumption
- Vote responsibly
- Plant a tree, get involved, volunteer, encourage your friends and family...

# IF YOU FEEL LIKE KNOWING MORE...

---

- "An Inconvenient Truth" movie
- "An Inconvenient Sequel: Truth to Power" movie
- "This Changes everything" Naomi Klein book
- "Merchants of Doubt" Naomi Oreskes & Erik M. Conway book
- "Swiat na rozdrozu" Marcin Popkiewicz book
- Get in touch: [iga.jozefiak@gmail.com](mailto:iga.jozefiak@gmail.com) / [igajozefiak](#)



A large white puzzle piece is centered on a blue background. Inside the puzzle piece is a black and white illustration of a lightbulb with a spiral filament. The text "THANK YOU FOR YOUR ATTENTION" is written in white, uppercase, serif font across the top half of the puzzle piece. Below it, the word "QUESTIONS?" is written in the same font, with a horizontal white line underneath it.

THANK YOU FOR YOUR ATTENTION  
QUESTIONS?