

Project: „Climate is a topic!!!”

2019-1-PL01-KA229-064863

Erasmus+

Cooperation for innovation and the exchange
of good practices

KA229 - School Exchange Partnerships

Our region and climate protection



Erasmus+





Our school and climate protection

Photo: A. Boguszewska



Air purity sensor



Sorting waste



Solar panels

Activities for climate protection

Photo:
A. Zalewska and O. Borowiec



Challenges of Warsaw related to climate policy

- Architecture
- Transport
- Energetics

Adaptation of the economy to European Union standards

- Reducing greenhouse gas emissions to the atmosphere, including carbon dioxide
- Improving energy efficiency

Challenges of Warsaw related to climate policy



Strategy of adaptation to climate change for Warsaw

Main goal:

- 20% reduction in CO₂ emissions in 2020 compared to base year 2007

Supporting objective:

- 20% reduction in energy consumption in 2020 compared to base year 2007



Strategy of adaptation to climate change in Warsaw

- Solar panels:
 - a way of getting energy from the sun
 - it is much better than using coal or other non-renewable sources for getting electricity or heat

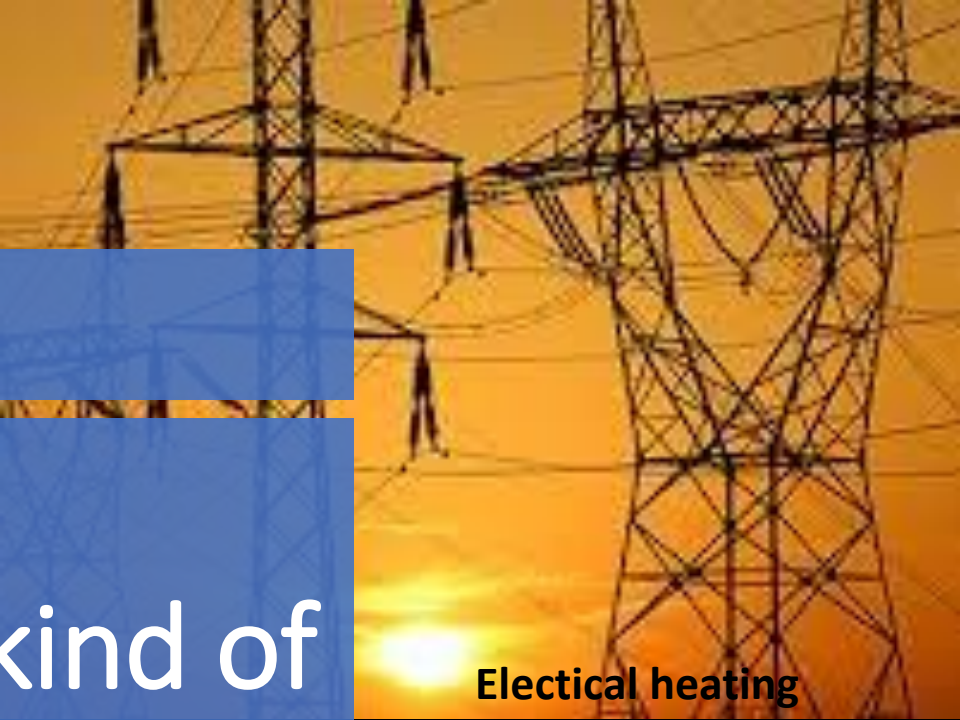


Strategy of adaptation to climate change in Warsaw

- Public transport
 - a great way to save energy and petrol (especially with electrical buses)
 - it is better to use one bus than twenty cars
 - there are 130 electrical buses in Warsaw



Coal



Electrical heating



Sun energy

What kind of heating?



Gas



How many?

- Almost 70% of houses are heated with solid fuels (theoretically mainly coal), with the majority of heating installations (about 3 million) are equipped with charging boilers - technologically outdated, with low efficiency and high emissions to the atmosphere. Only 17% of heat sources (boilers gas, municipal heating network, electric heating, ecological sources) does not contribute significantly to air pollution.

Strategy of adaptation to climate change for Warsaw Urban greenery

- A quarter of the city is nature area
- 8,000 hectares are urban forests
- Warsaw is one of the few European capitals in which forests are located within the city limits and occupy large areas.



Strategy of adaptation to climate change for Warsaw Green roofs

- Very often, urban areas do not provide enough space for greenery. The ideal solution is a green roof,
- The green roof is not only attractive to the eye, but also offers a number of other amenities such as water treatment, temperature control, sound insulation, as well as air purification and increasing biodiversity.



Waste sorting



Paper

Metals and plastics

Glass

Organic

Mixed waste

Green waste



Erasmus+ Cooperation for innovation and the exchange of good practices KA229 School Exchange Partnerships

The presentation was prepared as part of the project
implementation:

"Climate is a topic !!!"

2019-1-PL01-KA229-064863

Source and photos:

https://www.google.pl/search?q=autobus+elektryczny&dc=0&sxsrf=ACYBGNTV6WOlc5XMeyrHljZZ7oKSU8B5Uw:1571169554859&source=lnms&tbm=isch&sa=X&ved=0ahUKEwivycvZhp_IAhWwmlsKHZDQDAAQ_AUIESgB&biw=1536&bih=751#imgrc=2cDXAAyvoixeM